



3 Patriot Close Gillieston Heights, NSW



4



2



2

A beautifully refreshed haven for families

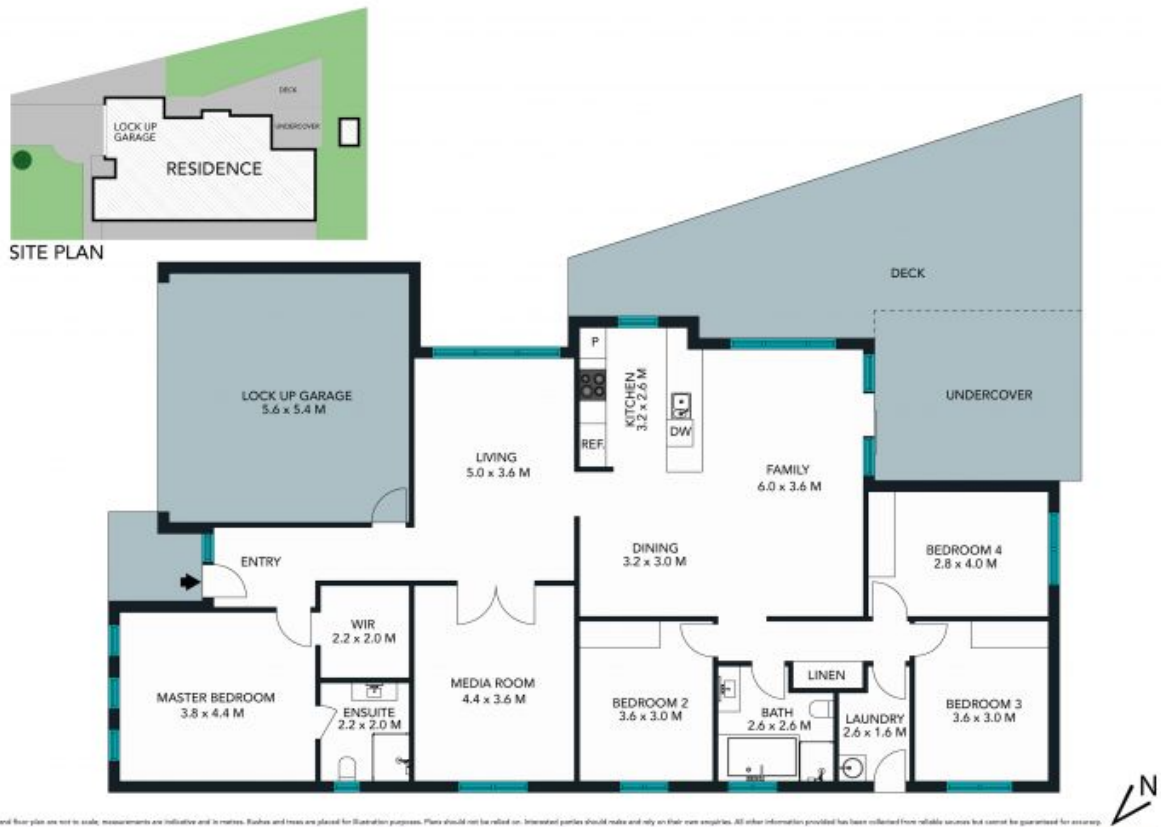
Stunningly refurbished throughout, this 8-year-old Allworth home makes a welcoming choice for families seeking modern comfort. Its designer interiors reveal 4-bedrooms, 2-bathrooms, open living zones and separate media room plus a gorgeous Merbau deck to the rear adding to the homes' overall sense of luxury. Situated in a quiet no-through road and located just 9 minutes to East Maitland and Greenhills Shopping complex, this property also makes for a quality investment in a blue-chip postcode.

- Open-plan family, living and dining zones plus a media room for movie nights
- Effortless outdoor flow to a sheltered Merbau deck with gas bayonet
- Luxe Caesarstone island kitchen appointed with gas cooking and dishwasher

Price: \$525,000

Matthew Clarkson

0456 791 524



3 Patriot Close, Gillieston Heights

STONE

3 Patriot Close

Gillieston Heights, NSW

