



1 Ashland Close Rutherford, NSW



5



1



1

Family-focused classic with a modern twist

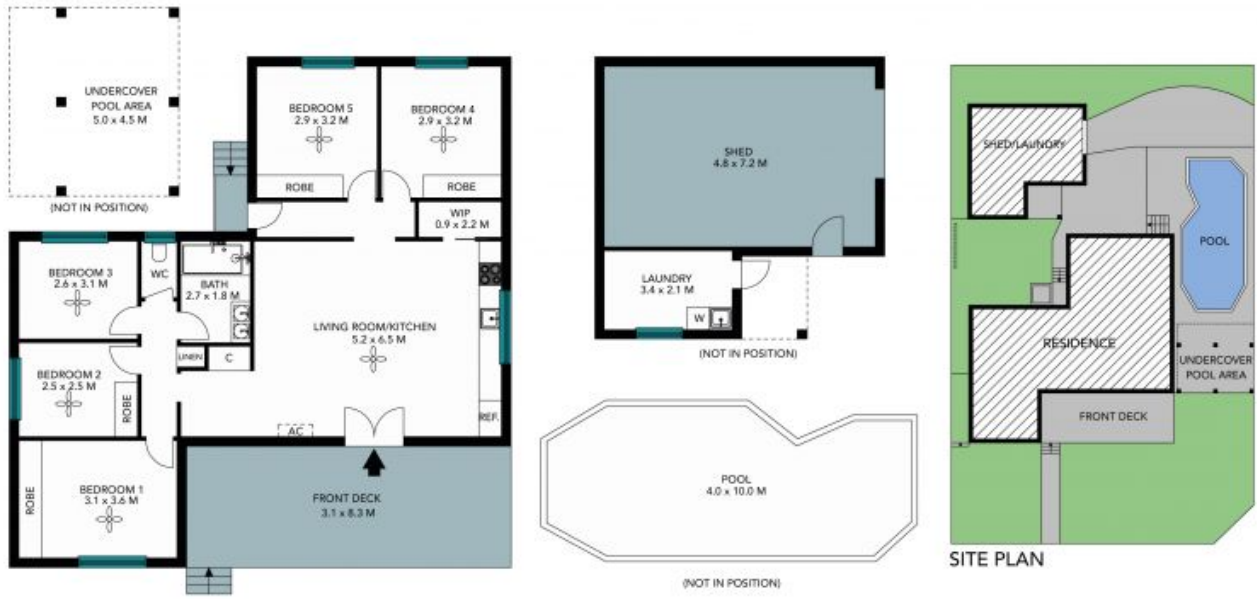
Set in a neighbourly cul-de-sac, this family home is blessed with updated interiors and an ambient vibe. A user-friendly floorplan incorporates open plan living with five bedrooms to satisfy all family needs, with a cleverly designed front deck and inground pool catering to the homes' entertainer appeal. Placed for convenience, it's just 1.4km to Rutherford Marketplace and 9.5kms (under 10 minutes) to Greenhills Shopping Centre.

- Spacious open plan living area with tiled floors and split-system air-con
- Streamline kitchen with s/steel oven and glass splashback catching views
- Ceiling fans appointed to all five bedrooms, built-in robes to four
- Modern family bathroom with twin vanity and separate toilet
- Entertainer's deck, low-care surrounds, summer-ready pool
- Side access to a large lock-up single garage

Price: \$384,000

Matthew Clarkson

0456 791 524



The site plan and floor plan are not to scale, measurements are indicative and in metres. Shades and lines are placed for illustration purposes. Plans should not be relied on. Interested parties should make and rely on their own enquiries. All other information provided has been collected from reliable sources but cannot be guaranteed for accuracy.

1 Ashland Close, Rutherford

STONE

1 Ashland Close

Rutherford, NSW

