



21 Regal Way Valentine, NSW

4

2

2

Ripe for renovation in coveted lakeside suburb

This lovingly cared for split level brick home offers so much potential for the owner. With its contemporary layout on a large, level block with an inviting facade, the home is ready to be revitalised into your dream forever home.

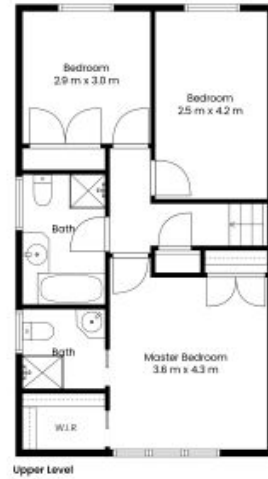
Backing directly onto bushland with rear access to your property, you're also within easy walking distance to the lake, walkways, the popular Croudace Bay parks, sporting grounds, and the Valentine Bowling Club. It's also a short walk to school for the kiddies, just 600m to Valentine Public School and there are dedicated pedestrian crossings at the Regal Way/Croudace Bay Rd intersection.

Price: \$1,060,000

Matthew Clarkson
0456 791 524

Donney Ristevski
0415 597 002

21 Regal Way
Valentine



The site plan and floor plan are not to scale; measurements are indicative and in metres. Bushes and trees are placed for illustration purposes. Plans should not be relied on, interested parties should make and rely on their own enquiries. All other information provided has been collected from reliable sources but cannot be guaranteed for accuracy.

